



LIFE'S
KITCHEN

— ♦ —

A LOVE OF FOOD &
A SENSE OF OCCASION

VENUE
PORTFOLIO



WWW.LIFESKITCHEN.COM
INFO@LIFESKITCHEN.COM
0207 248 1163

ABOUT US

Founded in 2005, Life's Kitchen provides venue management, event management and catering services at some of the most prestigious venues in London.

We offer the complete package...serving beautiful food, sensitively sourced and wonderfully presented in unique surroundings and all delivered by a highly trained, very experienced and dedicated team of staff and management.



SERVICES

Life's Kitchen looks at every function as a show, our superb service staff forming the cast, our world class chefs the back stage technicians and our guests the audience. Couple this with some of the best backdrops in the City and some of the finest ingredients from both these shores and afar and we are ready to raise the curtains.



WWW.LIFESKITCHEN.COM

INFO@LIFESKITCHEN.COM

0207 248 1163

SUSTAINABILITY

Life's Kitchen is committed to promoting sustainability. Concern for the environment and promoting a broader sustainability agenda are integral to Life's Kitchens' professional activities and the management of the company.

We aim to follow and to promote good sustainability practice, to reduce the environmental impacts of all our activities and to help our clients and partners to do the same.



VENUES

Life's Kitchen is honoured to have the privilege to cater at a wide range of visually rich and versatile venues. With a variety of charming venues, Livery Hall hire has never been easier.



WWW.LIFESKITCHEN.COM

INFO@LIFESKITCHEN.COM

0207 248 1163



TALLOW CHANDLERS' HALL

The Tallow Chandlers' Company can trace its roots back to the 13th century when it was originally formed as a religious fraternity, gaining full livery status in 1462. The Company has been on this site since 1476 and the present Hall dates from 1672, making it one of the three oldest Livery Halls in the City. It sits on the buried walls of the Roman Governor's Palace a stone's throw from the London Stone, the ancient heart of London.

THE PARLOUR

This beautiful room dates from the seventeenth century. The Parlour is ideal for receiving your guests before or after your meal and can also be used for smaller, more intimate luncheons and dinners.

THE COURTYARD

The secluded courtyard is entered by a discreet entrance. Up to 120 guests can be entertained for al fresco drinks during the warmer months.

THE LIVERY HALL

As one of the most elegant halls in the City the banqueting hall can be used for luncheons, dinners, meetings and receptions. Heraldic stained glass and fine paintings, combined with fine oak panelling, creates the perfect atmosphere for any special occasion.

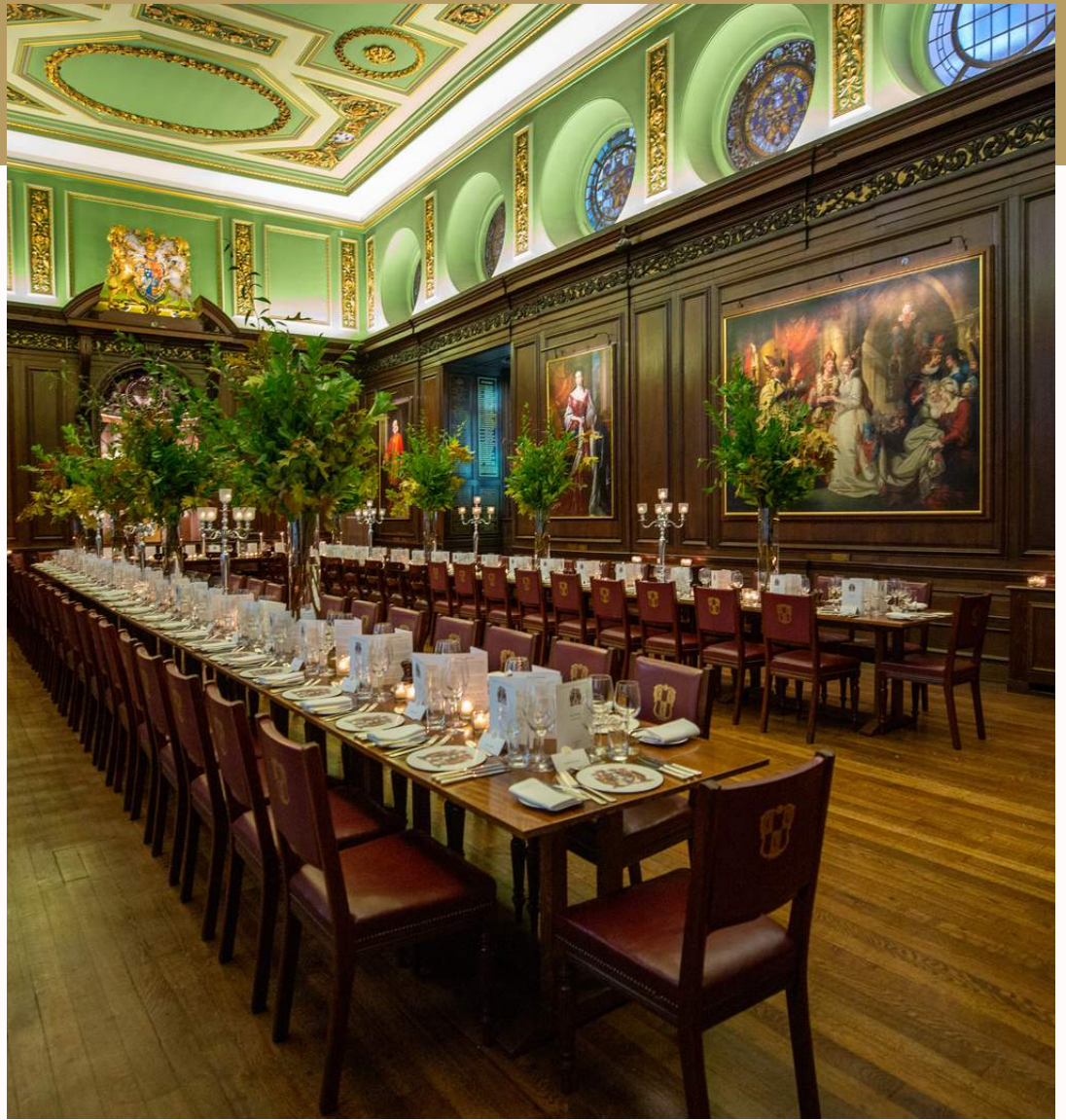
THE COURT ROOM

The Court Room is the only remaining original Stuart period Court Room in the City and can be used for small meetings.

WWW.LIFESKITCHEN.COM

INFO@LIFESKITCHEN.COM

0207 248 1163



CAPACITIES

Theatre Style – 100

Dinner – 95

Reception – 120

ADDRESS

4 Dowgate Hill
London EC2V 7HH

TRANSPORT

Cannon Street

WWW.LIFESKITCHEN.COM

INFO@LIFESKITCHEN.COM

0207 248 1163



PEWTERERS' HALL

Pewterers' Hall is situated in the heart of the city offering itself as a fully flexible event solution for both private and corporate events. Pewterers' is one of the very few Livery halls boasting a tranquil garden which is ideal for both post and pre-dinner receptions.

THE LIVERY HALL

Situated on the ground floor featuring beautiful chandeliers and having been recently refurbished this room lends itself to most occasions.

THE COURT ROOM

With its superb view of the garden which can be seen from the beautiful sash windows this room is perfect for dinners, receptions and especially conferences as access to high tech audio visual equipment is available on site.

LIBRARY

The Library can hold up to 10 guests, and is an elegant space with antique furnishings and will add gravitas to your meeting. With full Wi-Fi and a conference phone it is a popular space to book in conjunction with an event in one of the main rooms. The room can also be hired on its own.

WWW.LIFESKITCHEN.COM

INFO@LIFESKITCHEN.COM

0207 248 1163



CAPACITIES

Theatre Style – 100

Dinner – 84

Reception – 120

ADDRESS

Oat Lane
London EC2V 7DE

TRANSPORT

St. Paul's

WWW.LIFESKITCHEN.COM

INFO@LIFESKITCHEN.COM

0207 248 1163



FURNITURE MAKERS' HALL

Furniture Makers' Hall has many of the original Victorian features from when it was built in 1882 as well as bespoke wood furniture and fittings, including an ornate oak staircase running through the centre of the building. There is a choice of 3 distinct rooms for hire supported with an outstanding catering and events service, and is ideal for private meetings and dining events.

MIKE CLARE

The Mike Clare Room is on the first floor, reached via the beautiful oak spiral staircase that runs up through the heart of the venue. The Mike Clare Room features a high ceiling with ornate cornice carved wood and marble fireplace and a finely crafted boardroom table and chairs. The Mike Clare Room can comfortably seat up to 16 guests, or accommodate up to 25 for a more informal reception.

THE ARNOLD MOORE ROOM

The Arnold Moore Room is a simple and elegant wood panelled room, which is ideal for dining, celebrations or meetings. On the ground floor, it has natural light from windows at the front of the building. The intimate ambiance of the Arnold Moore Room is well suited to private meetings, interviews, small workshops and presentations for up to 15 people. The room has Wi-Fi and telephone facilities and other business services can be provided by the on-site event management team.

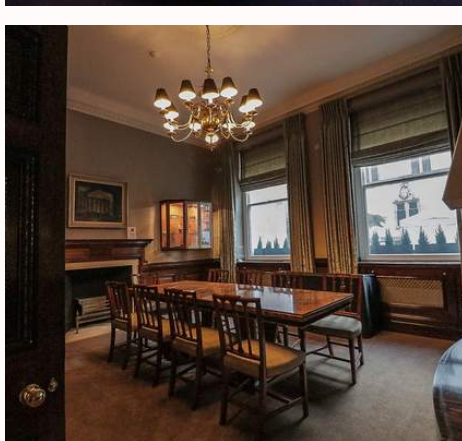
THE DAVID BURBIDGE ROOM

This beautiful event space on the ground floor with high ceiling, period features and natural daylight, provides a luxurious environment for dinners, receptions and conferences. There is also a fully integrated AV system for meetings with front projection and retractable screen. For parties the room can accommodate dancing for up to 120 guests. Outside there is a large open reception space for refreshments.

WWW.LIFESKITCHEN.COM

INFO@LIFESKITCHEN.COM

0207 248 1163



CAPACITIES

Theatre Style – 120

Dining – 80

Reception – 120

ADDRESS

12 Austin Friars
London, EC2N 2HE

TRANSPORT

Liverpool Street
Bank

WWW.LIFESKITCHEN.COM

INFO@LIFESKITCHEN.COM

0207 248 1163



GLAZIERS' HALL

Glaziers Hall is situated between the River Thames, and London's cultural Southbank and Borough Market. With unrivalled views over the River, Glaziers Hall offers seven flexible event spaces ideal for corporate events, presentations, conferences, receptions, and dinners.

BANQUETING HALL

The Banqueting Hall is a versatile and flexible space for up to 300 guests, suited to your next conference, exhibition or dinner.

RIVER ROOM

Situated on the River Thames and offering spectacular views of the City, the River Room with its panoramic floor to ceiling glazed arches is the perfect setting to inspire your guests at a gala dinner or reception. The space can hold up to 180 guests for a standing reception and 100 for a seated dinner.

COURT ROOM

Surrounded by oak panelling and stained glass windows, this room provides privacy and style for your conferences, with space for up to 160 delegates.

LIBRARY

The Library adjoins the Court Room, offering a refined room for refreshments or a breakout space for your guests.

BRIDGE ROOM

Directly on the River Thames, the Bridge Room is a multi-purpose space suitable for meetings, small conferences and away days. The space can accommodate 80 guests theatre style and 60 guests for a seated dinner.

THAMES ROOM

The Thames Room presents fantastic views of the City and River Thames. This space provides the perfect anteroom for the Bridge Room or as a breakout space in conjunction with the rest of the venue. The room can hold 12 guests for a boardroom meeting.

THE LONDON BRIDGE ARCHES

Featuring the exposed Sir John Rennie's London Bridge, this space showcases three restored Georgian brick arches, a grade listed original York stone floor and a bespoke wine cellar. The London Bridge Arches can hold up to 110 guests for a standing reception and 100 guests for a seated dinner.

WWW.LIFESKITCHEN.COM

INFO@LIFESKITCHEN.COM

0207 248 1163



CAPACITIES

Theatre Style – 300
Dining – 220
Reception – 300

ADDRESS

9 Montague Close
London, SE1 9DD

TRANSPORT

London Bridge

WWW.LIFESKITCHEN.COM

INFO@LIFESKITCHEN.COM

0207 248 1163



CUTLERS' HALL

The Magnificent Cutlers' Hall on Warwick Lane has been home to The Worshipful Company of Cutlers' since 1888. The breathtaking Livery Hall is located near St. Paul's and has two beautiful spaces - the Court Room and the Livery Hall.

LIVERY HALL

The grand Livery Hall is a versatile space, and is perfect for seated dinners, conferences and large drink receptions. The space can hold up to 120 guests on a U-Shape table configuration.

COURT ROOM

The Court Room is the ideal space for a pre dinner reception for those dining in the Livery Hall. The space can also be used for boardroom meetings, seated dinners, and theatre style conferences. The Court Room can also be used as a catering area for larger conferences taking place in the Livery Hall.



CAPACITIES

Theatre Style - 80
Dinner - 120
Reception - 180

ADDRESS

4 Warwick Lane
London, EC4M 7BR

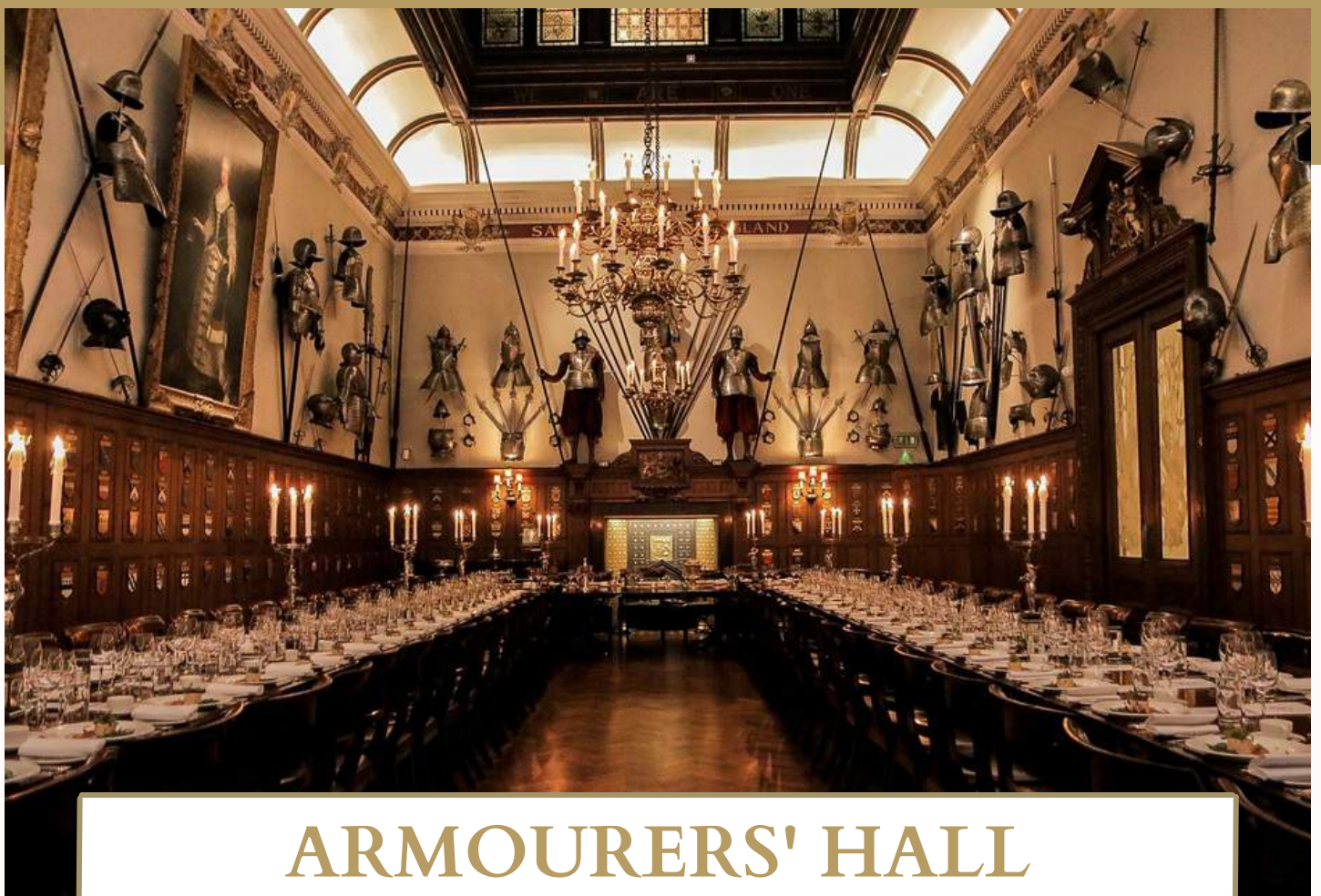
TRANSPORT

St. Paul's

WWW.LIFESKITCHEN.COM

INFO@LIFESKITCHEN.COM

0207 248 1163



ARMOURERS' HALL

Armourers' Hall is a unique setting for all types of functions such as stunning banquets, corporate presentations, formal and informal luncheons. The hall is home to a breathtaking array of armour making it a truly remarkable venue to host your event.

DRAWING ROOM

The Drawing Room also known as the 'Gold' Room is dominated by many magnificent paintings and a superb copy of the famous Ardebil Persian carpet at the Victoria & Albert Museum, creating a fabulous back drop for receptions, luncheons and dinners.

COURT ROOM

The elegant Court Room with the fine Regency dining table, late 18th century mahogany chairs and beautiful paintings, help make this room a fabulous historical setting for any event.

LIVERY HALL

The Livery Hall, with its beautifully high ceiling, adorned with stain glass windows, brass chandeliers and enriched by a bold display of 16th and 17th century arms and armour, is perfect for candle-lit banquets.



CAPACITIES

Theatre Style – 100
Dinner – 90
Reception – 150

ADDRESS

81 Coleman Street
London, EC2R 5BJ

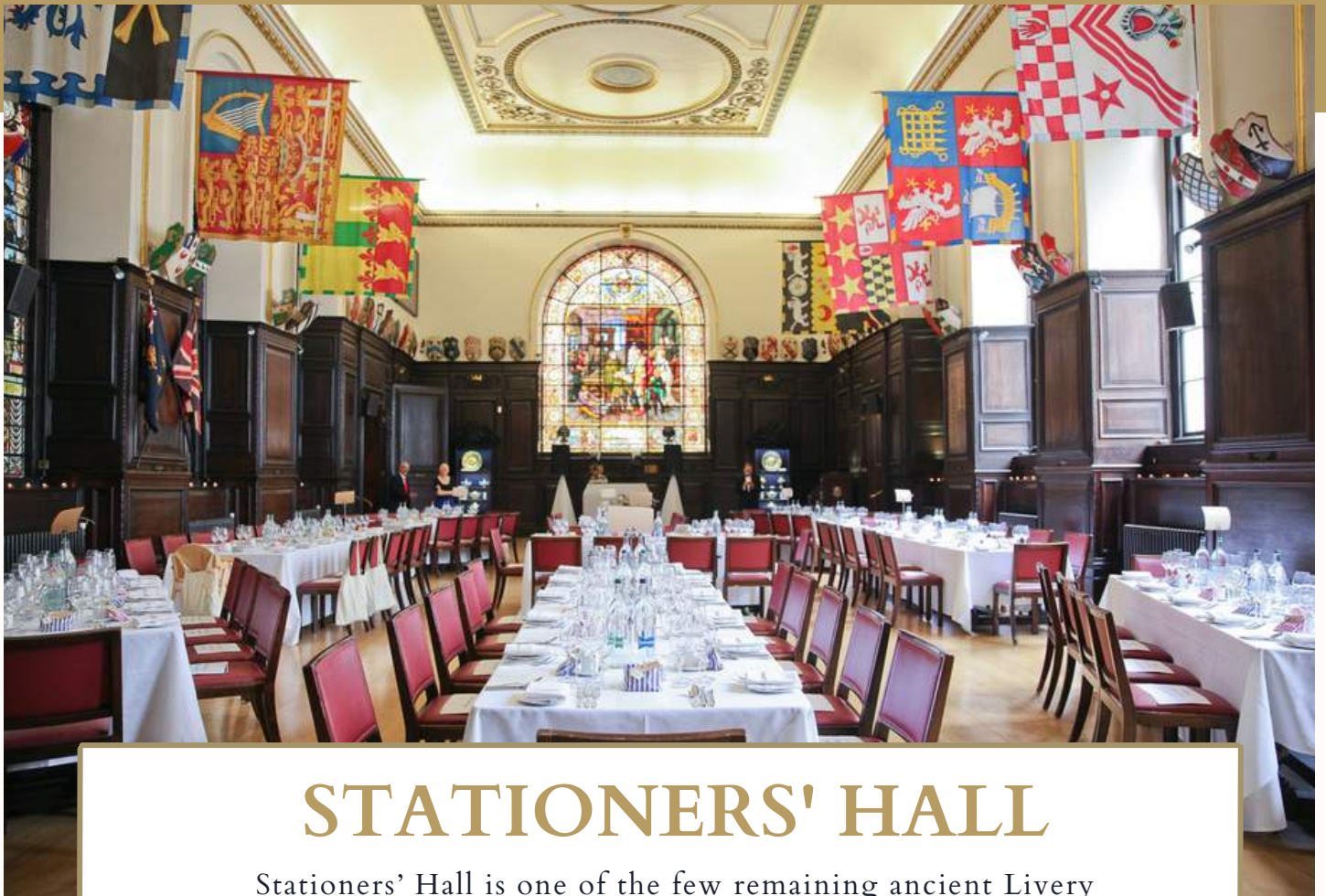
TRANSPORT

Moorgate

WWW.LIFESKITCHEN.COM

INFO@LIFESKITCHEN.COM

0207 248 1163



STATIONERS' HALL

Stationers' Hall is one of the few remaining ancient Livery Halls conveniently located near St Paul's Cathedral offering a flexible and fully accessible venue for your next event.

LIVERY HALL

This Livery Hall is particularly suitable for larger events such as conferences, meetings and exhibitions to formal seated lunches, dinners and standing receptions. The Hall is licenced for civil ceremonies for up to 200 guests and is also a splendid location for a wedding breakfast.

COURT ROOM

This Court Room is especially suitable for smaller meetings, seminars and AGMs; or as a catering area for larger conference events taking place in the Main Hall. It is also excellent for a drinks reception before a seated lunch or dinner; or wedding breakfast. It overlooks the Garden, which is accessed by a decorative balcony and wrought iron staircase. The Court Room is licensed for civil wedding ceremonies for up to 120 guests.

GARDEN

The Garden offers a unique setting for corporate and private barbecues, standing receptions and summer parties. It is also an excellent backdrop for those all-important wedding photographs and cocktails prior to the wedding breakfast. Live music and entertainment are permitted in the Garden.

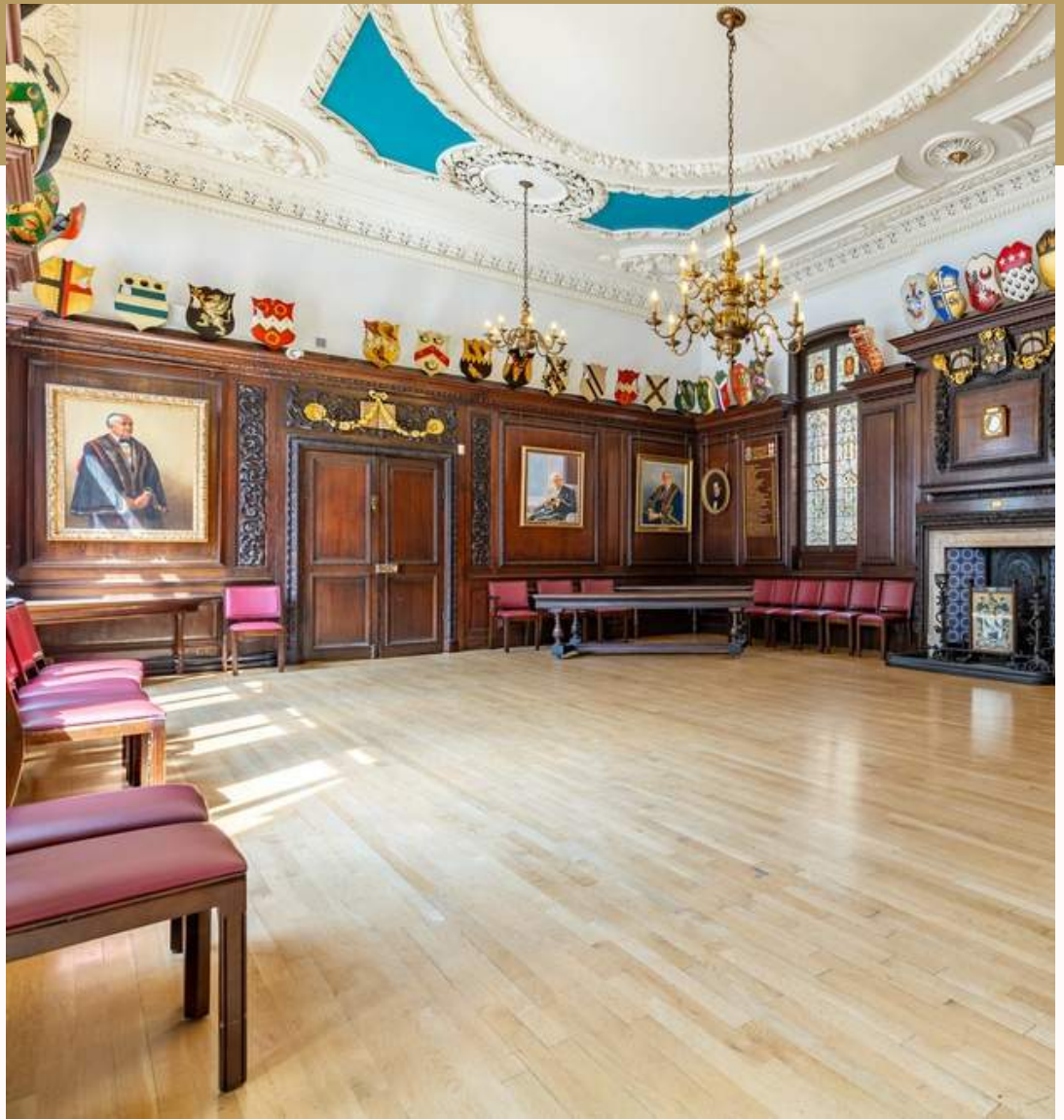
STOCK ROOM

The Stock Room offers a great space for your reception of pre-dinner drinks and is often used as a breakout space when hosting your event in the Main Hall.

WWW.LIFESKITCHEN.COM

INFO@LIFESKITCHEN.COM

0207 248 1163



CAPACITIES

Theatre Style – 200

Dinner – 205

Reception – 400

ADDRESS

Ave Maria Lane
London, EC4M 7DD

TRANSPORT

St. Paul's

WWW.LIFESKITCHEN.COM

INFO@LIFESKITCHEN.COM

0207 248 1163



LIFE'S
KITCHEN

A LOVE OF FOOD &
A SENSE OF OCCASION



WE LOOK FORWARD TO
BEING OF SERVICE.

Get in touch now to discuss your requirements.

020 7248 1163
info@lifeskitchen.com
www.lifeskitchen.com



@lifes_kitchen_



@lifeskitchenltd

LIFE'S
KITCHEN

A LOVE OF FOOD &
A SENSE OF OCCASION

/lifeskitchenltd



Life's Kitchen Ltd

