

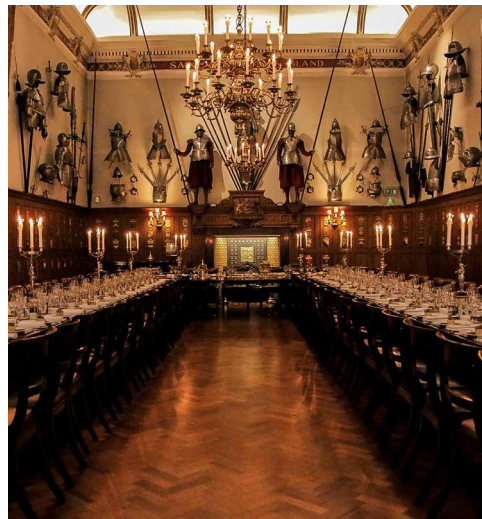
LIFE'S
KITCHEN

— ◆ —

A LOVE OF FOOD &
A SENSE OF OCCASION

VENUE
PORTFOLIO

LIFE'S KITCHEN LTD
0207 248 1163
INFO@LIFESKITCHEN.COM
WWW.LIFESKITCHEN.COM





PAINTERS' HALL

Painters' Hall is a stunning and historical venue, combining unique art and valued heritage. Home to The Worshipful Company of Painter-Stainers', Painters' Hall offers an accessible central London location and substantial 'in house' facilities including plasma screens, staging and Fibre Optic Broadband for all your conference needs.

THE LIVERY HALL

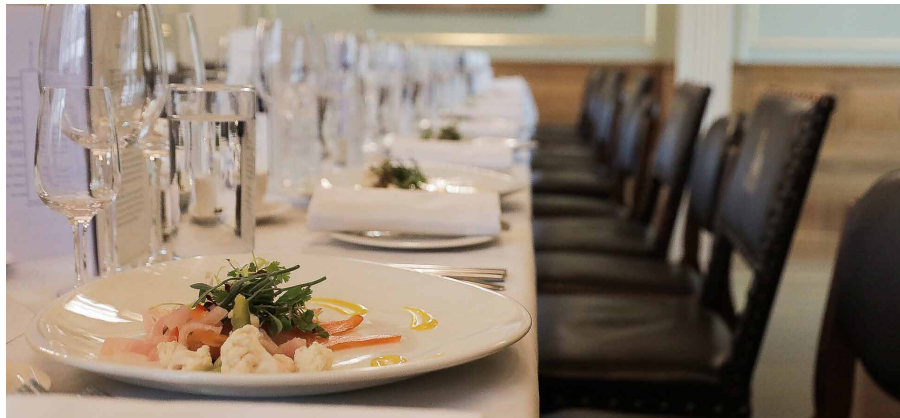
The splendid Livery Hall houses the Livery Company's fine collection of Royal Portraits dating from the late seventeenth century to the present day. The Livery Hall is a fantastic flexible space which works well for conferences, banquets or wedding receptions.

THE COURT ROOM

With interlinking doors in the Court Room, the space provides an ideal setting for pre-dinner drinks, small lunches, seminars or a dinner party.

THE PAINTED CHAMBER

The perfect intimate setting for business meetings, small lunches or a private dinner.



CAPACITIES

Theatre Style – 200
Dinner – 190
Reception – 250

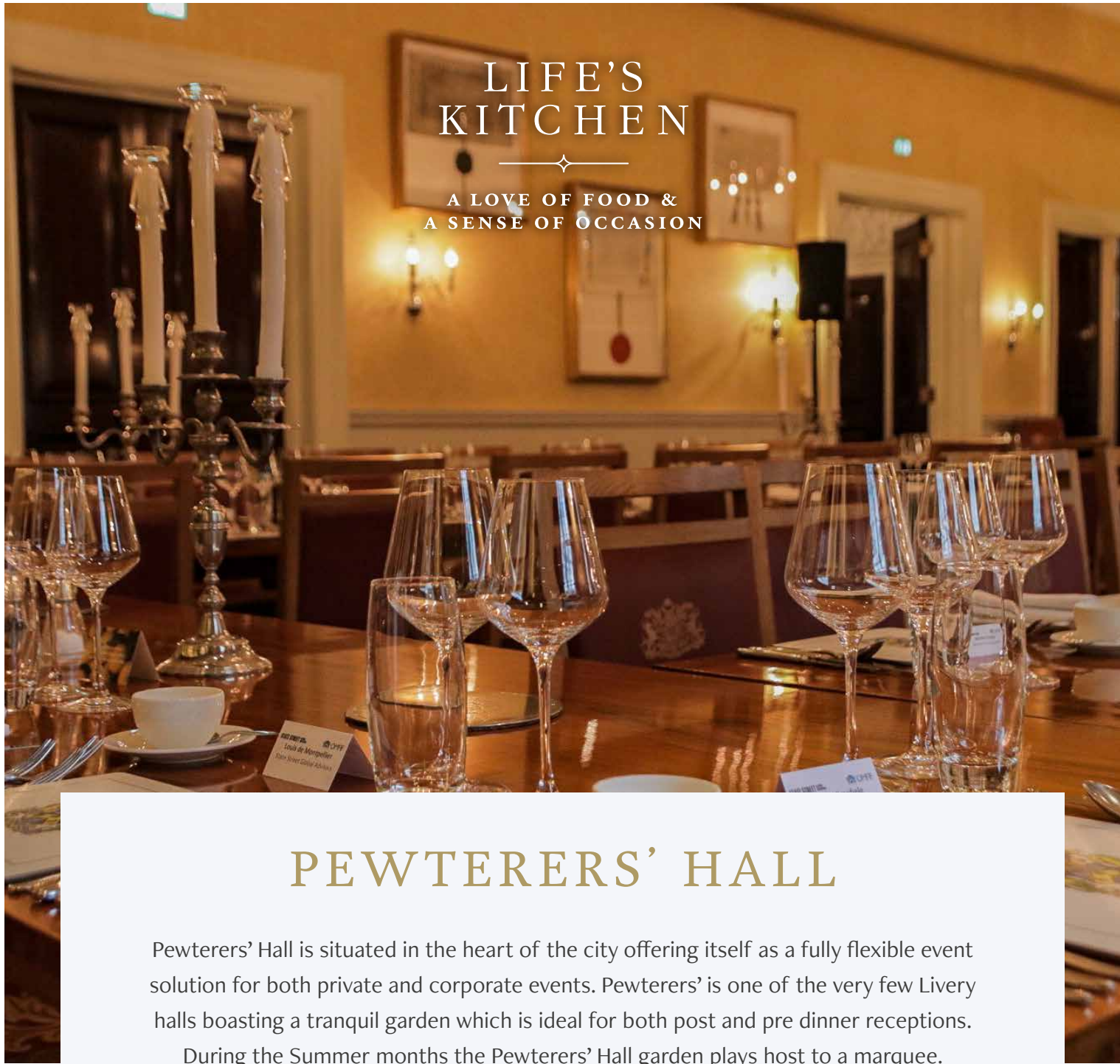
ADDRESS

9 Little Trinity Lane,
London EC4V 2AD

TRANSPORT

 Mansion House

	LIVERY HALL	COURT ROOM	PAINTED CHAMBER
Theatre style front projection	200	80	20
Boardroom front projection	60 (Hollow Square)	20	14
Cabaret style front projection	120 (8 per table)	36 (6 per table)	-
Reception	250 (cocktail)	150	30
Dinner / Lunch	190	50	14



PEWTERERS' HALL

Pewterers' Hall is situated in the heart of the city offering itself as a fully flexible event solution for both private and corporate events. Pewterers' is one of the very few Livery halls boasting a tranquil garden which is ideal for both post and pre dinner receptions. During the Summer months the Pewterers' Hall garden plays host to a marquee.

THE LIVERY HALL

Situated on the ground floor featuring beautiful chandeliers and having been recently refurbished this room lends itself for most occasions.

THE COURT ROOM

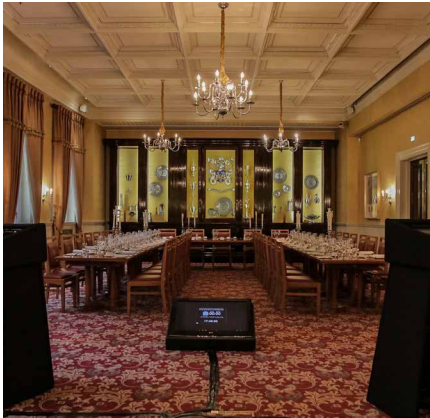
With its superb view of the garden which can be seen from the beautiful sash windows this room is perfect for dinners, receptions and especially conferences as access to high tech audio visual equipment is available on site.

MARQUEE

During the Summer months the beautiful gardens plays host to a marquee, perfect for those summer receptions. Linking onto the Livery Hall the marquee is suitable for a dinner, reception, or dinner dance.

LIBRARY

This small meeting room can be hired on its own or as part of the exclusive hire for up to 10 guests.



CAPACITIES

Theatre Style – 100
Dinner – 95
Reception – 120

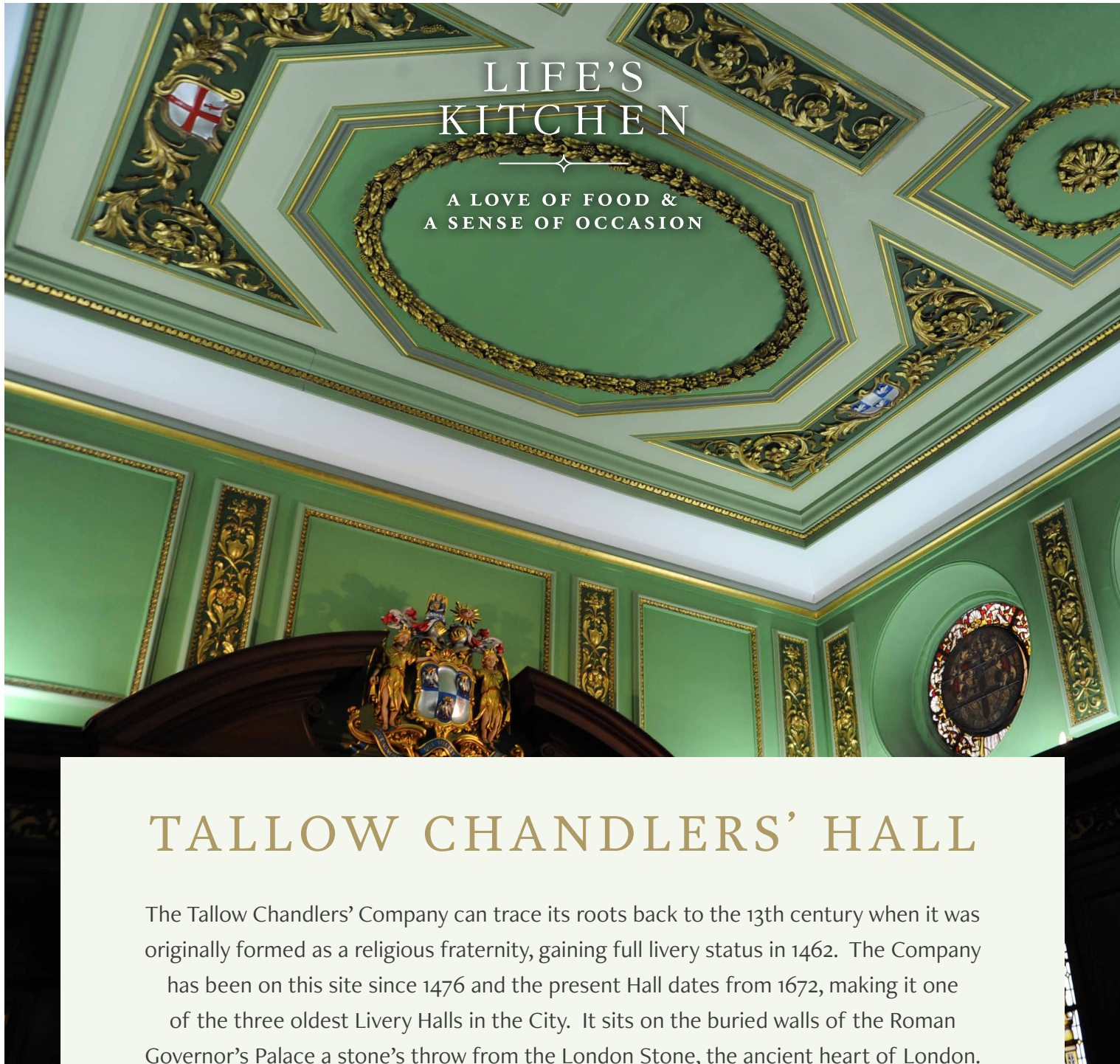
ADDRESS

Oat Lane,
London EC2V 7DE

TRANSPORT

St. Paul's

	LIVERY HALL	COURT ROOM	LIBRARY
Theatre style front projection	100	100	-
Boardroom front projection	20	20	10
Cabaret style front projection	48	48	-
Reception	120	120	-
Dinner / Lunch	95	95	10



TALLOW CHANDLERS' HALL

The Tallow Chandlers' Company can trace its roots back to the 13th century when it was originally formed as a religious fraternity, gaining full livery status in 1462. The Company has been on this site since 1476 and the present Hall dates from 1672, making it one of the three oldest Livery Halls in the City. It sits on the buried walls of the Roman Governor's Palace a stone's throw from the London Stone, the ancient heart of London.

THE PARLOUR

This beautiful room dates from the seventeenth century. The Parlour is ideal for receiving your guests before or after your meal and can also be used for smaller, more intimate luncheons and dinners.

THE COURTYARD

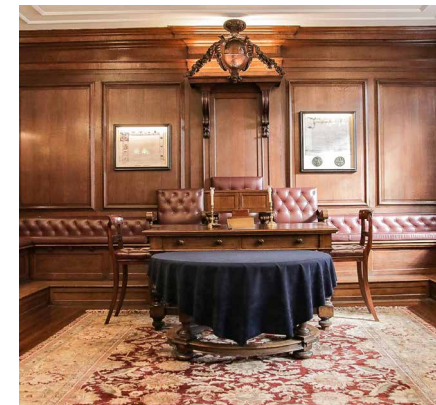
The secluded courtyard is entered by a discreet entrance. Up to 120 guests can be entertained for al fresco drinks during the warmer months.

THE LIVERY HALL

As one of the most elegant halls in the City the banqueting hall can be used for dinners, luncheons, meetings and receptions. Heraldic stained glass and fine paintings, combined with fine oak panelling, creates the perfect atmosphere for any special occasion.

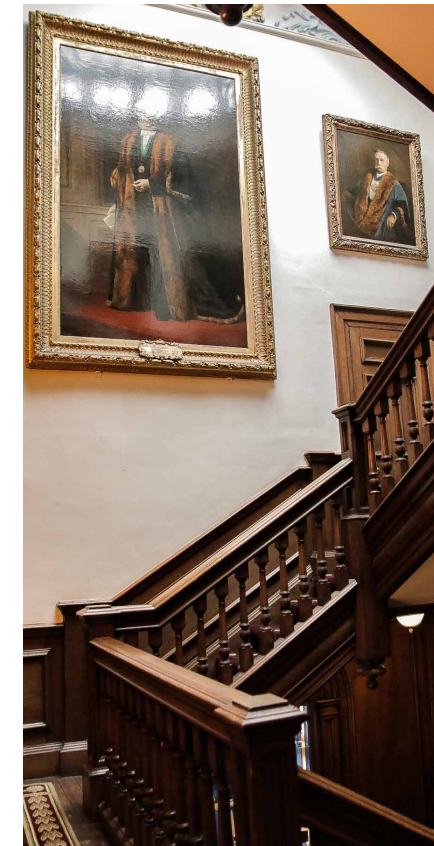
THE COURT ROOM

The Court Room is the only remaining original Stuart period Court Room in the City and can be used for small meetings.



CAPACITIES

Theatre Style – 100
Dinner – 95
Reception – 120



ADDRESS

Dowgate Hill,
London EC2V 7HH

TRANSPORT

 Cannon Street

	PARLOUR	COURTYARD RECEPTION	HALL	COURT ROOM
Theatre style front projection	60	-	100	-
Boardroom no AV	30	-	42	40
U-Shape no AV	30	-	45	-
Reception	60	120	120	-
Dinner / Lunch	30	-	95	-



LIFE'S
KITCHEN
A LOVE OF FOOD &
A SENSE OF OCCASION

BUTCHERS' HALL

Butchers' Hall is now open following a monumental refurbishment. This Livery Hall provides a range of versatile event spaces topped off with a stunning roof garden, top class facilities with state of the art AV and lighting, and a dedicated fibre optic broadband line.

THE GREAT HALL

The signature Great Hall accommodates over 150 diners and 150 conference delegates and is one of the most beautiful event spaces in the City. Bathed in natural light, with state-of-the-art AV and technical support, the stunning wood panelled Hall lends itself to a myriad of layout options.

THE COURT ROOMS

Completely refurbished for the 2019 reopening, together, the Court Rooms seat diners with the versatility for receptions, conferences, and workshops for up to 120 delegates as well as other formal, or casual get togethers.

ROOF GARDEN

Available for independent hire or as part of your event. The Roof Garden comes with a variety of refreshment

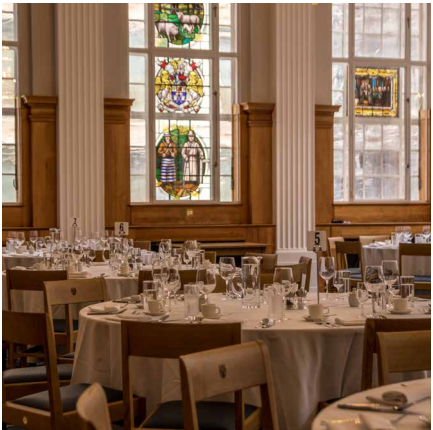
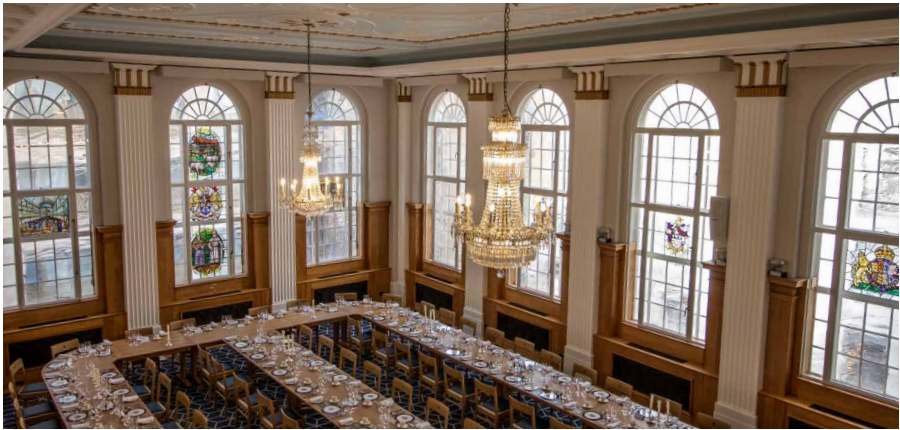
options, incredible views and facilities. The intimacy of the Roof Garden can add a certain uniqueness to your event providing a never to be forgotten occasion.

THE MEZZANINE

A new meeting and dining events space with options for views into the Great Hall or total privacy. We consider this to be perfect for private and Directors' dining and private meetings - discrete, opulent and absolutely exclusive.

THE GROUND FLOOR

This brand-new ground floor facility is, we believe, the best multi-purpose room in the City! Be it meet and greet, registration, partitioned break out areas or bar, the choice is yours.



CAPACITIES

Dinner – 160
Reception – 250
Theatre Style – 180
Cabaret – 100

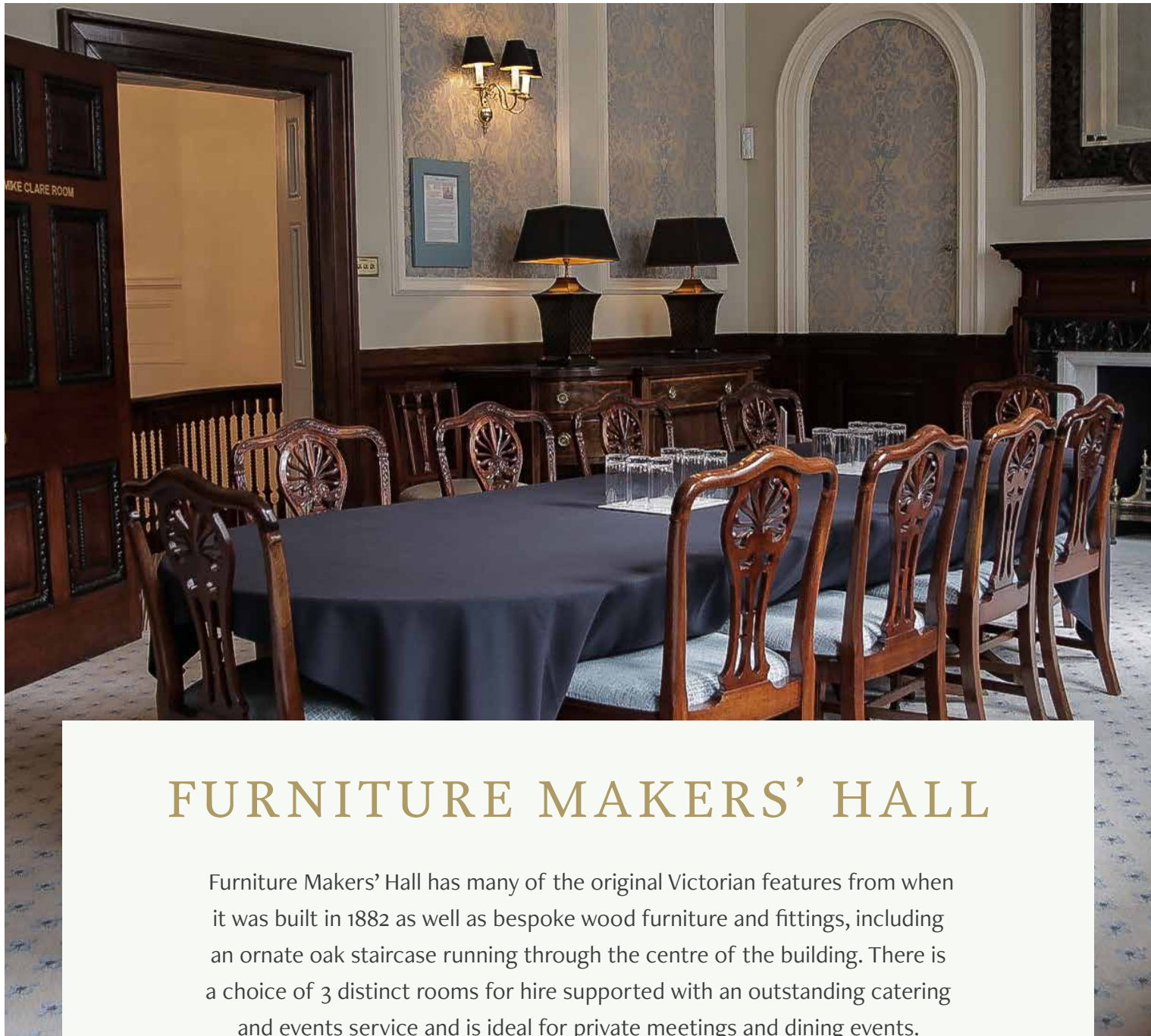
ADDRESS

87 Bartholomew Close,
London, EC1A 7EB

TRANSPORT

Barbican / Farringdon

	GREAT HALL	COURT ROOMS	ROOF GARDEN	THE MEZZANINE	THE GROUND FLOOR
Theatre	180	100	-	-	-
Cabaret rounds	120	80	-	-	-
Standing Reception	250	150	80	10	150
Dinner / Lunch	160	120	-	10	-



FURNITURE MAKERS' HALL

Furniture Makers' Hall has many of the original Victorian features from when it was built in 1882 as well as bespoke wood furniture and fittings, including an ornate oak staircase running through the centre of the building. There is a choice of 3 distinct rooms for hire supported with an outstanding catering and events service and is ideal for private meetings and dining events.

THE ARNOLD MOORE ROOM

The Arnold Moore Room is a simple and elegant wood panelled room, which is ideal for dining, celebrations or meetings. On the ground floor, it has natural light from windows at the front of the building. The intimate ambiance of the Arnold Moore Room is well suited to private meetings, interviews, small workshops and presentations for up to 15 people. The room has Wi-Fi and telephone facilities and other business services can be provided by the on-site event management team.

MIKE CLARE

The Mike Clare Room is on the first floor, reached via the beautiful oak spiral staircase that runs up through the heart of the house. The Mike Clare Room features a high ceiling

with ornate cornicing, a carved wood and marble fireplace and a finely crafted boardroom table and chairs. The Mike Clare Room can comfortably seat up to 16 guests, or accommodate up to 25 for a more informal reception.

THE DAVID BURBIDGE ROOM

This beautiful event space on the ground floor with high ceilings, period features and natural daylight, provides a luxurious environment for dinner, receptions and conferences. There is also a fully integrated AV system for meetings with front projection and retractable screen and for parties the room can accommodate dancing for up to 120 guests. Outside there is a large open reception space for refreshments.



CAPACITIES

Theatre Style – 120
Dining – 80
Reception – 120

ADDRESS

12 Austin Friars,
London, EC2N 2HE

TRANSPORT

🚶 Liverpool Street / Bank

	ARNOLD MOORE	MIKE CLARE	DAVID BURBIDGE
Theatre	15	25	120
Classroom	-	-	50
U-Shape	-	-	33
Boardroom	10	16	30
Banqueting rounds	-	20	80
Sprigs with tabletops	-	-	84
Reception / Standing	20	30	120



GLAZIERS HALL

Glaziers Hall is situated between the River Thames, and London’s cultural Southbank and Borough Market, with unrivaled views over the River, Glaziers Hall offers seven flexible event spaces ideal for corporate events, presentations, conferences, receptions, and dinners.

BANQUETING HALL

The Banqueting Hall is a versatile and flexible space for up to 300 guests, suited to your next conference, exhibition or dinner.

RIVER ROOM

Situated on the River Thames and offering spectacular views of the City, the River Room with its panoramic floor to ceiling glazed arches is the perfect setting to inspire your guests at a gala dinner or reception.

COURT ROOM

Surrounded by oak panelling and stained glass windows, this room provides privacy and style for your conferences, with space for up to 160 delegates.

LIBRARY

The Library adjoins the Court Room, offering a refined room for refreshments or a breakout space for your guests. Accommodating up to 70 standing, it holds an unrivalled

collection of publications on the constitutional crafts of Glaziers Hall; glass painting and scientific instrumentation

BRIDGE ROOM

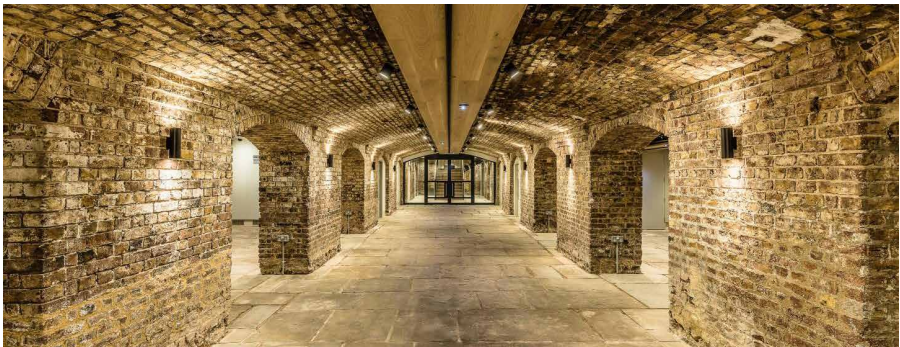
Directly on the River Thames, the Bridge Room is a multi-purpose space suitable for meetings, small conferences and away days.

THAMES ROOM

The Thames Room presents fantastic views of the City and River Thames. This space provides the perfect anteroom for the Bridge Room or as a breakout space in conjunction with the rest of the venue.

THE LONDON BRIDGE ARCHES

Featuring the exposed Sir John Rennie’s London Bridge, our newly created space showcases three restored Georgian brick arches, a grade listed original York stone floor and bespoke wine cellar.



CAPACITIES

Theatre Style – 300
Dinner – 220
Reception – 300

ADDRESS

9 Montague Close,
London, SE1 9DD

TRANSPORT

🚶 London Bridge

	BANQUETING HALL	RIVER ROOM	COURT ROOM	LIBRARY	BRIDGE ROOM	THAMES ROOM	L.B. ARCHES
Theatre	300	140	160	60	80	25	50
Classroom	126	63	63	28	-	-	-
Cabaret	200	100	100	25	48	-	-
Dinner	220	100	100	40	60	20	100
Dinner Dance	200	80	80	-	-	-	60
Boardroom	50	36	36	18	30	12	45
Reception	300	180	180	70	70	30	110



LIFE'S KITCHEN

A LOVE OF FOOD &
A SENSE OF OCCASION

STATIONERS' HALL

Tucked away yet in the City of London, Stationers' Hall is a hidden gem yards away from iconic St Pauls Cathedral. This beautiful venue benefits from a large secluded courtyard garden and is the perfect setting for client entertaining, corporate events, wedding ceremonies & receptions and the perfect garden party.

STOCK ROOM

The Stock Room displays the armorial shields of Past Masters and the Company including HRH The Duke of Windsor and combined with the oak panelling and carvings this is the ideal room for candlelit receptions.

COURT ROOM

The Court Room is a beautifully light room overlooking the garden, with rococo gold embellishments adorning the walls and enhanced by an 18th century carved mantelpiece.

THE LIVERY HALL

The Livery Hall is the grandest room and is at the heart of Stationers Hall; with its opulent oak panelling and carvings from the 1600s to the imposing stained glass windows, this is a room which creates a fabulous atmosphere for any event.

CAPACITIES

Theatre Style – 200
Dinner – 220
Reception – 400
Garden Parties – 250

ADDRESS

Ave Maria Lane,
London EC4M 7DD

TRANSPORT

🚶 St Pauls



LIFE'S KITCHEN

A LOVE OF FOOD &
A SENSE OF OCCASION

ARMOURERS' HALL

Armourers' Hall is a unique setting for all types of functions such as stunning banquets, corporate presentations, formal and informal luncheons. The hall is home to a breathtaking array of armour making it a truly remarkable venue to host your event.

DRAWING ROOM

The Drawing Room also known as the 'Gold' Room is dominated by many magnificent paintings and a superb copy of the famous Ardebil Persian carpet at the Victoria & Albert Museum, creating a fabulous back drop for receptions, luncheons and dinners.

COURT ROOM

The elegant Court Room with the fine Regency dining table, late 18th century mahogany chairs and beautiful paintings, help make this room a fabulous historical setting for any event.

LIVERY HALL

The Livery Hall, with its beautifully high ceiling, adorned with stain glass windows, brass chandeliers and enriched by a bold display of 16th and 17th century arms and armour, is perfect for candle-lit banquets.

CAPACITIES

Theatre Style – 100
Dinner – 90
Reception – 150

ADDRESS

81 Coleman Street
London, EC2R 5BJ

TRANSPORT

🚶 Moorgate



MUSEUM OF LONDON

The Museum of London is a fantastic and unique venue overlooking the remains of the Roman City Wall, one of the oldest parts of London. This venue is perfect for any event seeking the unique, historical wonders of being surrounded by an amalgamation of collections which document the history of London from prehistoric to modern times.

With three venue spaces holding a capacity for up to 200-1000 people, the museum is perfect for a diverse range of larger events.

THE ENTRANCE HALL

The Entrance Hall is a striking, modern open space with a futuristic bar perfect for drinks receptions or for dinners of up to 200 people.

THE SACKLER HALL

The Sackler Hall is a vast event space that is central to the museum and with hi-tech AV and access to a private Garden Court Area, it is ideal for Gala Dinners and Awards Ceremonies.

THE GALLERIES

The Galleries are best suited to smaller events be it from drinks receptions in the 17th Century Pleasure Gardens to Dinners in the People's City Gallery

CAPACITIES

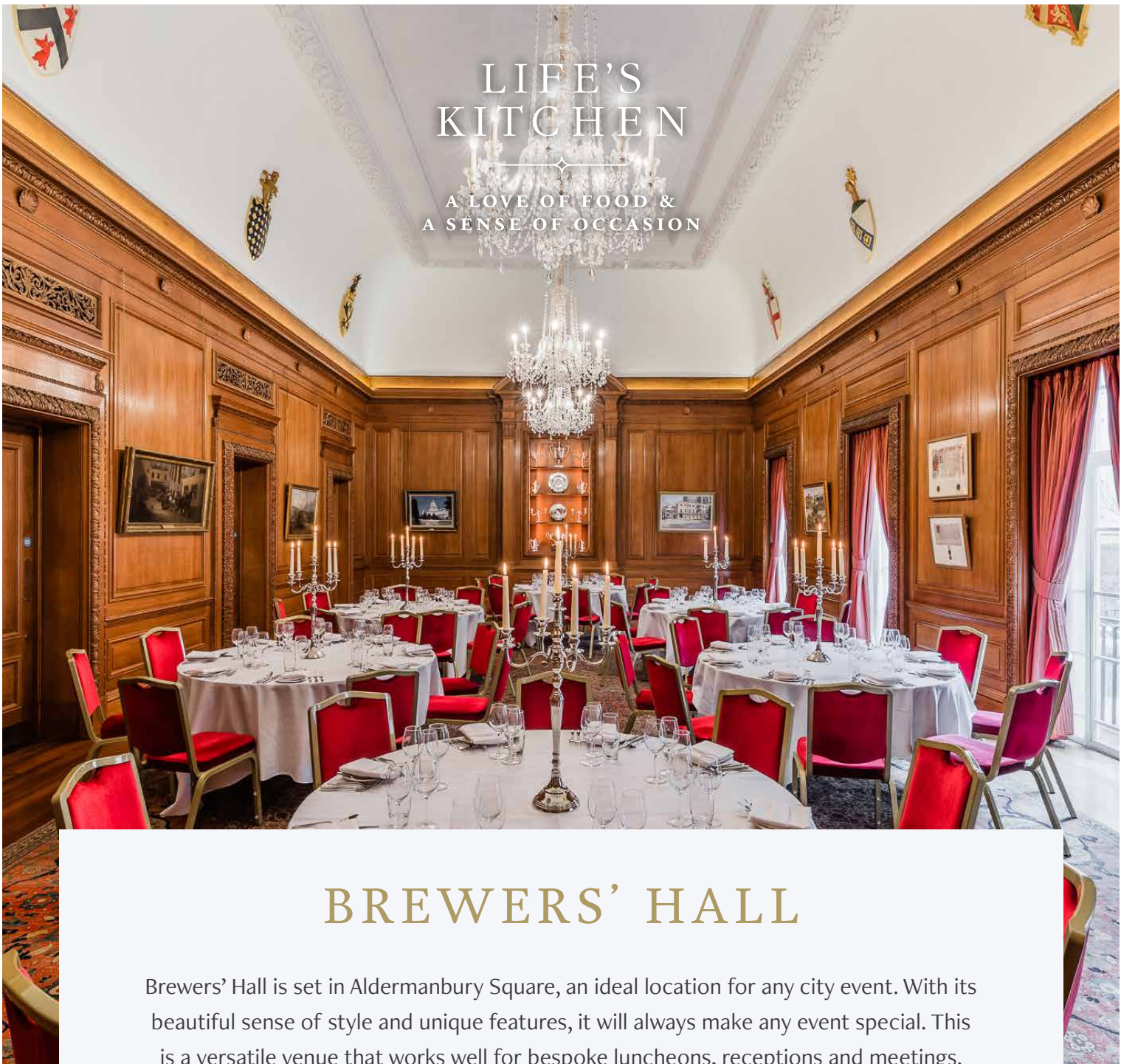
Theatre Style – 1,000
Dinner – 350
Reception – 250

ADDRESS

150 London Wall,
London EC2Y 5HN

TRANSPORT

🚶 Barbican



BREWERS' HALL

Brewers' Hall is set in Aldermanbury Square, an ideal location for any city event. With its beautiful sense of style and unique features, it will always make any event special. This is a versatile venue that works well for bespoke luncheons, receptions and meetings.

THE LIVERY HALL

With floor to ceiling windows that ensure natural light, the Main Hall creates a sense of history and occasion to enhance any event. The traditional oak wood panelling, together with fine chandeliers, make it the perfect back drop for meetings and receptions.

THE COURT ROOM

The perfect space for luncheons and boardroom style meetings. The room is wood panelled and has a marble fireplace with a Carrara panel by Sir Charles Wheeler

PRA. Communicating doors to the Livery Hall form an adaptable space that can be used as an independent meeting space or an extension to the Hall.

THE COMMITTEE ROOM

The Committee Room is ideal for private dining, smaller break-out space, an organiser's office or as a secured cloakroom area. Communicating doors lead directly to the Court Room, as well as the main landing area, allowing an adaptable use of the space.

CAPACITIES

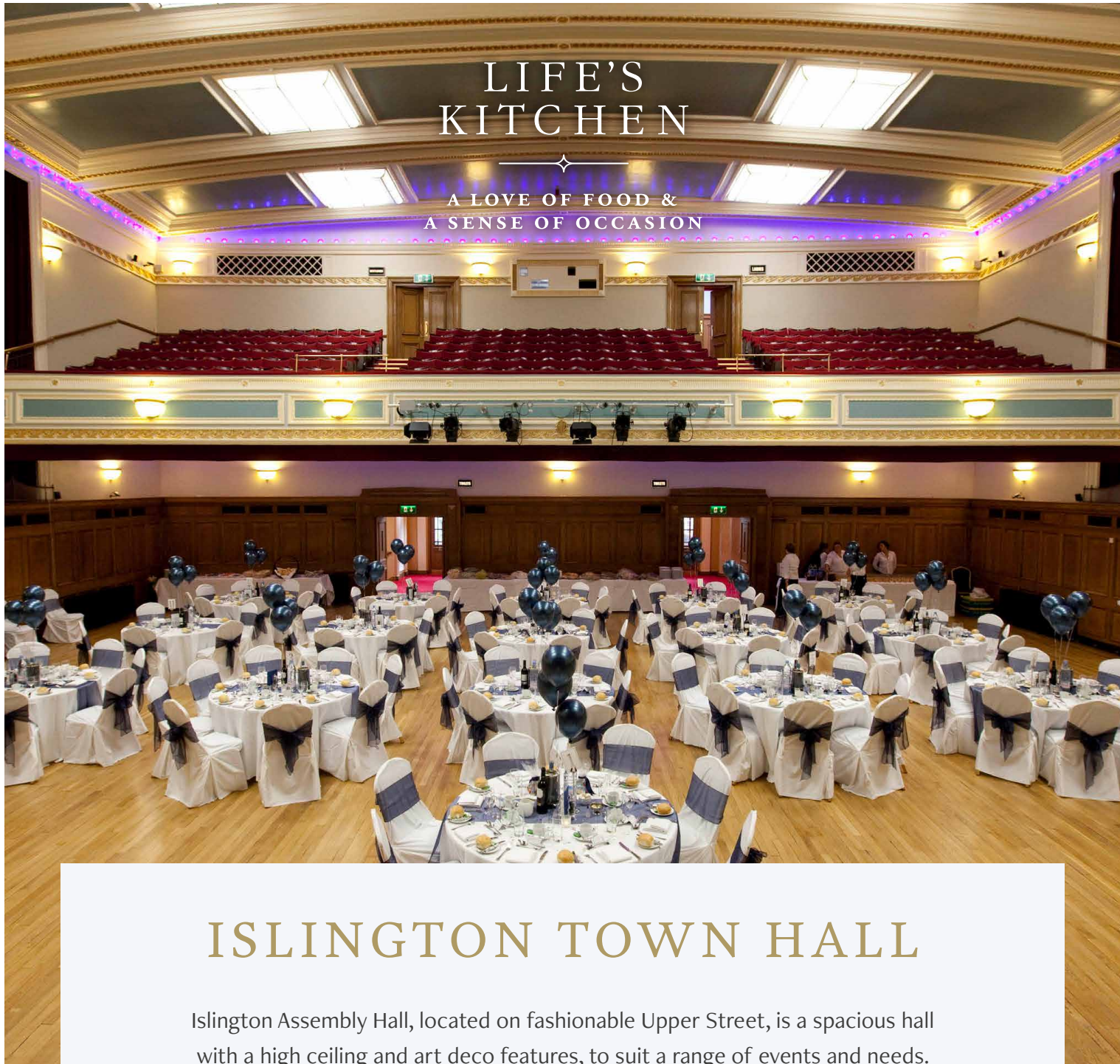
Canape Receptions – 120
Theatre – 100
Dinners/Lunches – 80

ADDRESS

Aldermanbury Square
London
EC2V 7HR

TRANSPORT

🚶 Moorgate / Barbican



ISLINGTON TOWN HALL

Islington Assembly Hall, located on fashionable Upper Street, is a spacious hall with a high ceiling and art deco features, to suit a range of events and needs.

ISLINGTON TOWN HALL

The licensed bar, unrestricted views and sprung dance floor is ideal for corporate and private parties for up to 250 guests or 176 for all-seated dinner-dances.

The fantastic PA, experienced technical team and magnificent stage make the iconic concert venue perfect for hosting an event with live music.

Conference organisers and delegates can enjoy a 5-metre-wide projection screen and workshop break-out space, with seating in a theatre-style for up to 230. Additional seating in the balcony increases the capacity up to 430 for events making use of the stage.

CAPACITIES

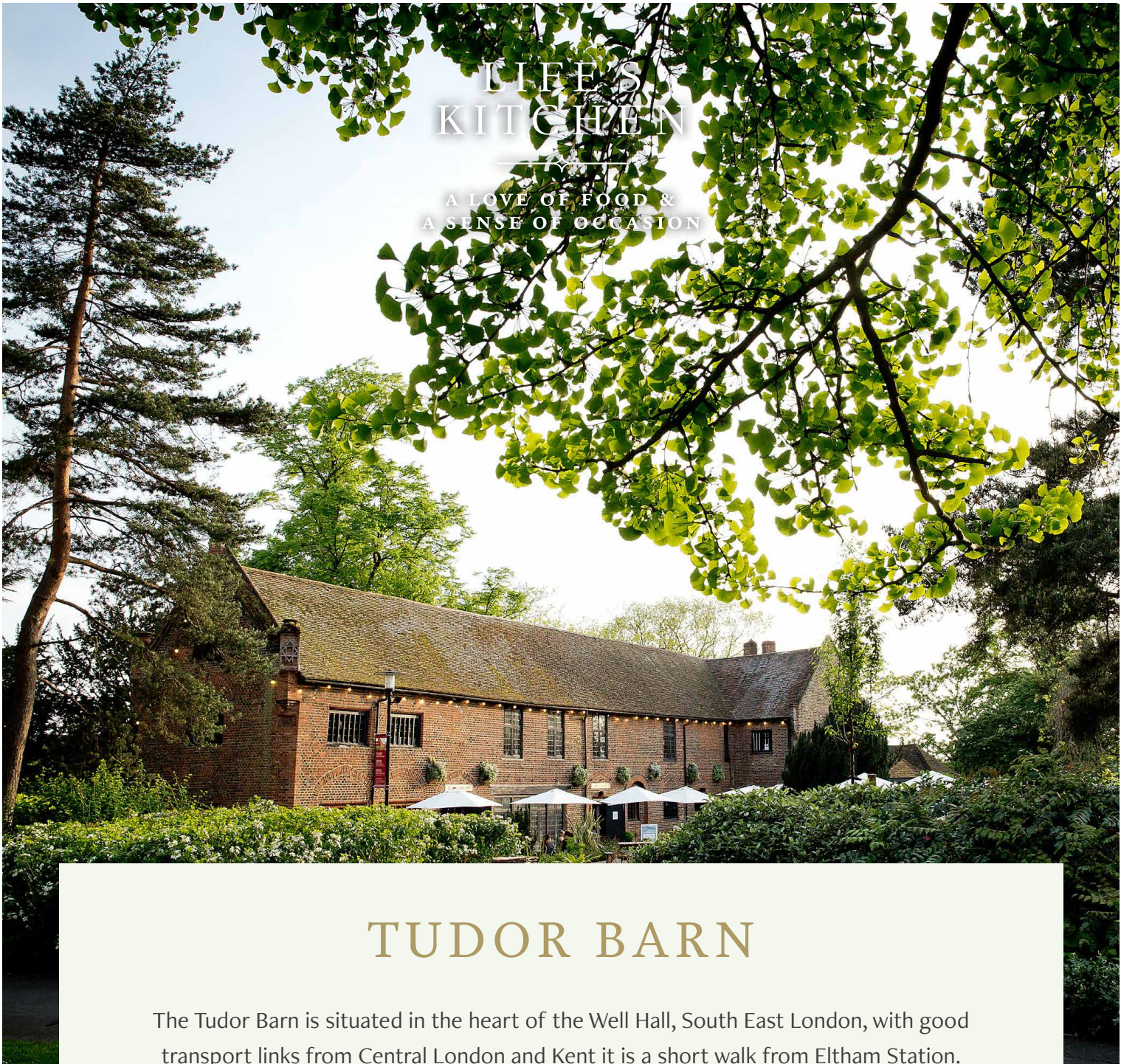
Theatre Style – 420
Cabaret – 176
Standing – 600

ADDRESS

Islington Town Hall,
Upper St, London N1 2UD

TRANSPORT

Angel
Essex Road



TUDOR BARN

The Tudor Barn is situated in the heart of the Well Hall, South East London, with good transport links from Central London and Kent it is a short walk from Eltham Station.

TUDOR BARN

The Tudor Barn is all that remains of the Medieval Estate built in 1525 by William Roper. From 1899, the Tudor Barn became the home of famous children's writer Edith Nesbit, most famous for The Railway Children. A hidden gem surrounded by beautiful parkland, an idyllic venue for your special day.

CAPACITIES

Garden – 200
Dinner – 150
Reception – 200

ADDRESS

Well Hall Pleasaunce, Well
Hall Rd, London SE9 6SZ

TRANSPORT

Eltham



WE LOOK FORWARD TO BEING OF SERVICE

Get in touch now to discuss your requirements.

☎ 020 7248 1163

✉ info@lifeskitchen.com

🌐 www.lifeskitchen.com

🐦 [/lifeskitchenltd](https://twitter.com/lifeskitchenltd)

f [/lifeskitchenltd](https://facebook.com/lifeskitchenltd)

in [/company/life's-kitchen-ltd](https://linkedin.com/company/life's-kitchen-ltd)

📷 [/lifeskitchen_](https://instagram.com/lifeskitchen_)

Various Squibb Vicious Media photos
used throughout this brochure